

MARKET HISTORY

Includes data through 5/2018

Philadelphia County, PA Single-Family



Market History Report

The Market History Report details current and historical statistical information for single-family listings recorded within TREND. This statistical report is organized by county and contains valuable month-over-month, year-over-year statistical information for each of the last 10 years. The Market History Report details activity in a particular market over a 10-year period – from where it's been to where it's at now. The easy-to-read month-over-month, year-over-year chart and graph enables you to clearly identify the year-over-year changes while accounting for seasonal and market trends.

Utilizing the report allows you to gain a better understanding of your market. This will give you new insights and increase your company's value when working with consumers. This powerful report is provided exclusively to TREND members.

Contents

Total Inventory	3
Inventory Accumulation	4
Pending Units	5
Settled Units	6
Total Settled Volume	7
Median Settled Price.....	8
Average Settled Price	9
Average Settled Price / Original Price.....	10

Definitions

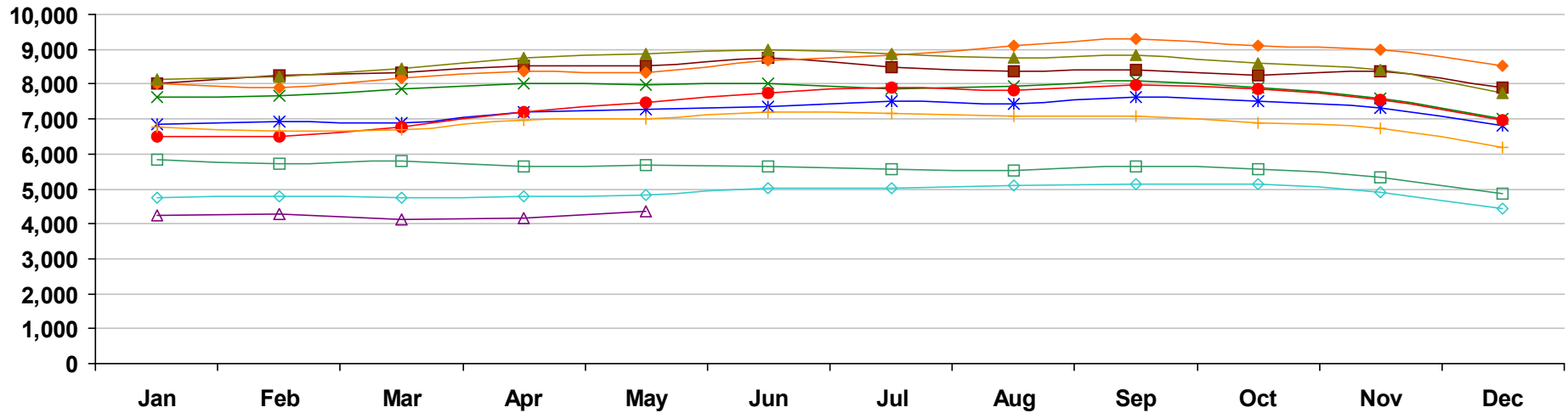
Total Inventory	The number of active single-family listings on the market on the last day of the specified month.
Inventory Accumulation	The number of months it would take to exhaust the current supply of single-family listings at the current absorption rate.
Absorption Rate	The average number of single-family listings sold in the market per month over the previous 12 months.
Pending Units	The number of single-family listings with Pending dates during the specified month.
Settled Units	The number of single-family listings with Settled dates during the specified month.
Total Settled Volume	The total dollar volume of single-family listings that have settled during the specified month.

Median Settled Price	The median price that single-family listings settled for during the specified month. Determined by arranging all Settled Listings in numerical order by price and then selecting the middle value.
Average Settled Price	The average price that single-family listings settled for during the specified month. Determined by dividing the Total Settled Volume by the number of Settled Listings.
Average Settled Price / Original Price	The average percentage of the Original Price that single-family listings settled for during the specified month. This number is determined by dividing the Settled Price by the Original Price for every listing, summing them and then dividing by the number of settled listings. TREND excludes listings if the Settled Price is greater than 150 percent or less than 50 percent of the Original Price. This ensures the percentage is more representative of listings in the market area.
Percent Change	The change in value as compared to the same month of the previous year. Indicated by +/-0.0%.

Notes on Statistics

- All statistics are from TREND's monthly Residential Activity Reports. Due to the fluid nature of MLS data, insignificant statistical variations may occur with regard to sales activity between the various TREND reports.
- Mobile homes and condominiums are excluded from these statistics.
- This report includes information on listings and transactions facilitated through TREND and does not reflect the total number of listings and transactions of a given market area.
- All monetary statistics are rounded to the nearest \$10.

Philadelphia County, PA - Single-Family - Total Inventory

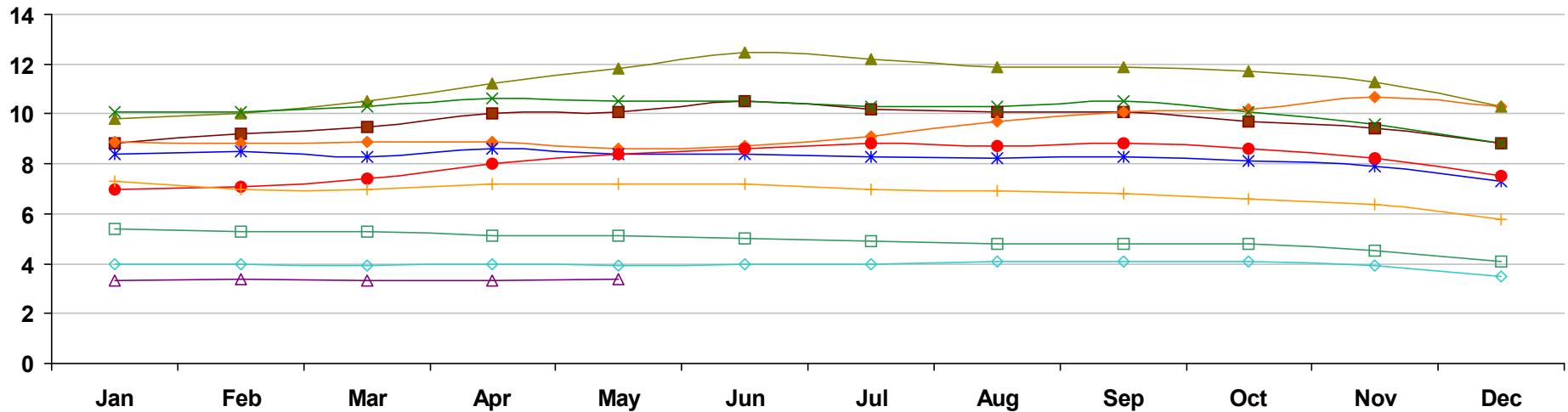


	Jan	Feb	Mar	Apr	May	Jun	Jul	Aug	Sep	Oct	Nov	Dec
■ 2009	8,024 -9.5%	8,235 -5.9%	8,329 -6.4%	8,540 -5.8%	8,531 -4.1%	8,739 -2.8%	8,466 -6.5%	8,372 -6.1%	8,409 -8.2%	8,232 -7.5%	8,349 -4.0%	7,907 -4.5%
◆ 2010	8,012 -0.1%	7,913 -3.9%	8,160 -2.0%	8,362 -2.1%	8,316 -2.5%	8,667 -0.8%	8,818 4.2%	9,124 9.0%	9,309 10.7%	9,117 10.8%	8,972 7.5%	8,531 7.9%
▲ 2011	8,122 1.4%	8,204 3.7%	8,447 3.5%	8,770 4.9%	8,877 6.7%	8,980 3.6%	8,860 0.5%	8,744 -4.2%	8,836 -5.1%	8,599 -5.7%	8,412 -6.2%	7,750 -9.2%
✕ 2012	7,611 -6.3%	7,672 -6.5%	7,861 -6.9%	8,025 -8.5%	7,993 -10.0%	8,010 -10.8%	7,855 -11.3%	7,947 -9.1%	8,085 -8.5%	7,886 -8.3%	7,602 -9.6%	6,994 -9.8%
✱ 2013	6,857 -9.9%	6,921 -9.8%	6,870 -12.6%	7,200 -10.3%	7,295 -8.7%	7,355 -8.2%	7,495 -4.6%	7,428 -6.5%	7,609 -5.9%	7,517 -4.7%	7,329 -3.6%	6,820 -2.5%
● 2014	6,493 -5.3%	6,488 -6.3%	6,767 -1.5%	7,200 0.0%	7,480 2.5%	7,731 5.1%	7,887 5.2%	7,825 5.3%	7,979 4.9%	7,857 4.5%	7,553 3.1%	6,966 2.1%
+ 2015	6,767 4.2%	6,645 2.4%	6,688 -1.2%	6,953 -3.4%	7,022 -6.1%	7,204 -6.8%	7,144 -9.4%	7,073 -9.6%	7,090 -11.1%	6,880 -12.4%	6,719 -11.0%	6,176 -11.3%
□ 2016	5,829 -13.9%	5,732 -13.7%	5,808 -13.2%	5,652 -18.7%	5,662 -19.4%	5,652 -21.5%	5,576 -21.9%	5,524 -21.9%	5,623 -20.7%	5,581 -18.9%	5,349 -20.4%	4,852 -21.4%
◇ 2017	4,732 -18.8%	4,786 -16.5%	4,736 -18.5%	4,797 -15.1%	4,824 -14.8%	5,001 -11.5%	5,008 -10.2%	5,099 -7.7%	5,150 -8.4%	5,149 -7.7%	4,904 -8.3%	4,431 -8.7%
△ 2018	4,231 -10.6%	4,281 -10.6%	4,130 -12.8%	4,177 -12.9%	4,344 -10.0%							

Market History Report © 2018 TREND. Compiled 6/21/2018. Information deemed reliable, but not guaranteed. Non-members contact TREND for reprint permission.

TREND • 660 American Avenue, Suite 203 • King of Prussia, PA 19406 • 1-877-330-9900 • www.trendmls.com

Philadelphia County, PA - Single-Family - Inventory Accumulation

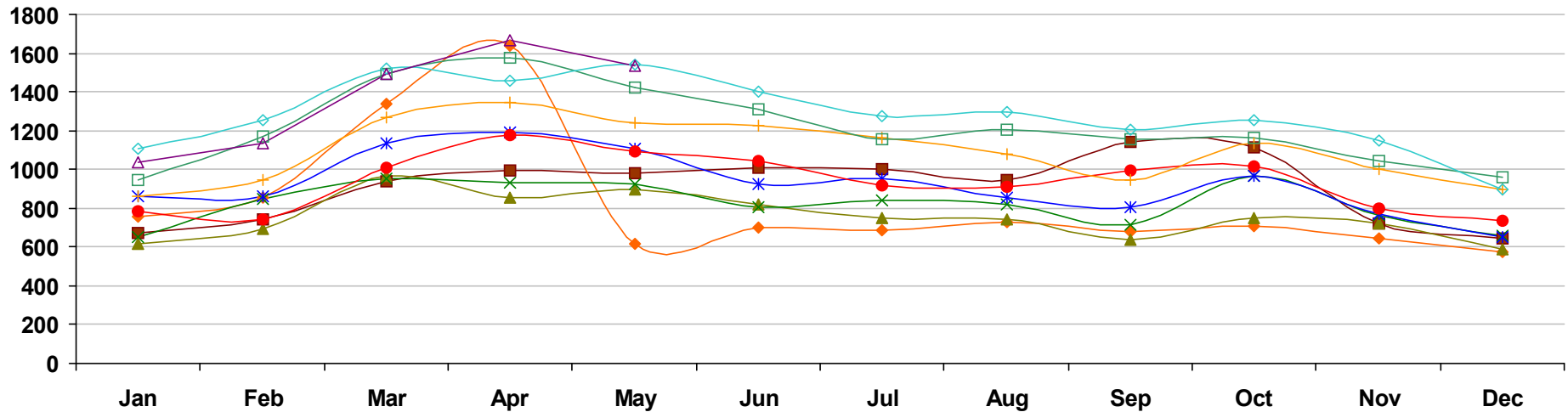


	Jan	Feb	Mar	Apr	May	Jun	Jul	Aug	Sep	Oct	Nov	Dec
■ 2009	8.8 17.3%	9.2 22.7%	9.5 20.3%	10.0 22.0%	10.1 23.2%	10.5 22.1%	10.2 15.9%	10.1 13.5%	10.1 9.8%	9.7 5.4%	9.4 2.2%	8.8 -1.1%
◆ 2010	8.9 1.1%	8.8 -4.3%	8.9 -6.3%	8.9 -11.0%	8.6 -14.9%	8.7 -17.1%	9.1 -10.8%	9.7 -4.0%	10.1 0.0%	10.2 5.2%	10.7 13.8%	10.3 17.0%
▲ 2011	9.8 10.1%	10.0 13.6%	10.5 18.0%	11.2 25.8%	11.8 37.2%	12.5 43.7%	12.2 34.1%	11.9 22.7%	11.9 17.8%	11.7 14.7%	11.3 5.6%	10.3 0.0%
✕ 2012	10.1 3.1%	10.1 1.0%	10.3 -1.9%	10.6 -5.4%	10.5 -11.0%	10.5 -16.0%	10.3 -15.6%	10.3 -13.4%	10.5 -11.8%	10.1 -13.7%	9.6 -15.0%	8.8 -14.6%
✱ 2013	8.4 -16.8%	8.5 -15.8%	8.3 -19.4%	8.6 -18.9%	8.4 -20.0%	8.4 -20.0%	8.3 -19.4%	8.2 -20.4%	8.3 -21.0%	8.1 -19.8%	7.9 -17.7%	7.3 -17.0%
● 2014	7.0 -16.7%	7.1 -16.5%	7.4 -10.8%	8.0 -7.0%	8.4 0.0%	8.6 2.4%	8.8 6.0%	8.7 6.1%	8.8 6.0%	8.6 6.2%	8.2 3.8%	7.5 2.7%
+ 2015	7.3 4.3%	7.0 -1.4%	7.0 -5.4%	7.2 -10.0%	7.2 -14.3%	7.2 -16.3%	7.0 -20.5%	6.9 -20.7%	6.8 -22.7%	6.6 -23.3%	6.4 -22.0%	5.8 -22.7%
□ 2016	5.4 -26.0%	5.3 -24.3%	5.3 -24.3%	5.1 -29.2%	5.1 -29.2%	5.0 -30.6%	4.9 -30.0%	4.8 -30.4%	4.8 -29.4%	4.8 -27.3%	4.5 -29.7%	4.1 -29.3%
◇ 2017	4.0 -25.9%	4.0 -24.5%	3.9 -26.4%	4.0 -21.6%	3.9 -23.5%	4.0 -20.0%	4.0 -18.4%	4.1 -14.6%	4.1 -14.6%	4.1 -14.6%	3.9 -13.3%	3.5 -14.6%
△ 2018	3.3 -17.5%	3.4 -15.0%	3.3 -15.4%	3.3 -17.5%	3.4 -12.8%							

Market History Report © 2018 TREND. Compiled 6/21/2018. Information deemed reliable, but not guaranteed. Non-members contact TREND for reprint permission.

TREND • 660 American Avenue, Suite 203 • King of Prussia, PA 19406 • 1-877-330-9900 • www.trendmls.com

Philadelphia County, PA - Single-Family - Pending Units

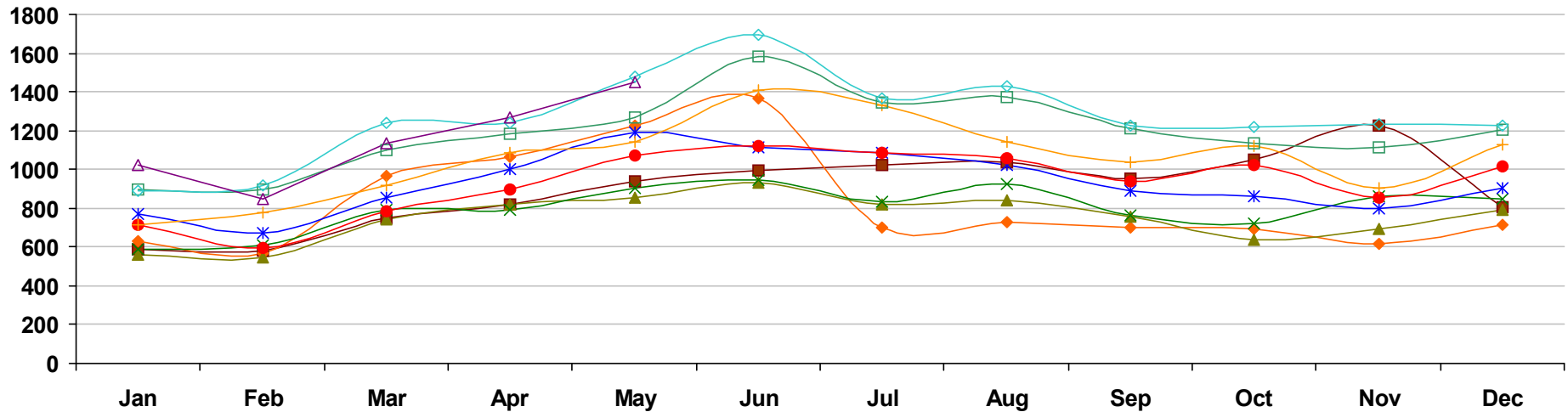


	Jan	Feb	Mar	Apr	May	Jun	Jul	Aug	Sep	Oct	Nov	Dec
2009	670 -28.1%	739 -26.3%	942 -15.4%	993 -11.0%	981 -7.5%	1,011 0.8%	999 4.9%	949 3.3%	1,142 34.8%	1,114 55.8%	720 8.4%	647 8.4%
2010	756 12.8%	856 15.8%	1,336 41.8%	1,636 64.8%	618 -37.0%	697 -31.1%	686 -31.3%	727 -23.4%	682 -40.3%	705 -36.7%	646 -10.3%	576 -11.0%
2011	614 -18.8%	691 -19.3%	969 -27.5%	855 -47.7%	894 44.7%	818 17.4%	749 9.2%	742 2.1%	634 -7.0%	747 6.0%	719 11.3%	588 2.1%
2012	648 5.5%	846 22.4%	953 -1.7%	930 8.8%	925 3.5%	806 -1.5%	840 12.1%	816 10.0%	716 12.9%	966 29.3%	766 6.5%	660 12.2%
2013	859 32.6%	864 2.1%	1,132 18.8%	1,191 28.1%	1,104 19.4%	922 14.4%	951 13.2%	857 5.0%	808 12.8%	969 0.3%	772 0.8%	654 -0.9%
2014	785 -8.6%	741 -14.2%	1,012 -10.6%	1,176 -1.3%	1,095 -0.8%	1,045 13.3%	916 -3.7%	911 6.3%	994 23.0%	1,018 5.1%	797 3.2%	736 12.5%
2015	860 9.6%	948 27.9%	1,269 25.4%	1,345 14.4%	1,240 13.2%	1,225 17.2%	1,160 26.6%	1,076 18.1%	946 -4.8%	1,137 11.7%	1,000 25.5%	900 22.3%
2016	944 9.8%	1,168 23.2%	1,494 17.7%	1,578 17.3%	1,419 14.4%	1,309 6.9%	1,153 -0.6%	1,208 12.3%	1,157 22.3%	1,160 2.0%	1,047 4.7%	957 6.3%
2017	1,108 17.4%	1,254 7.4%	1,518 1.6%	1,460 -7.5%	1,544 8.8%	1,400 7.0%	1,276 10.7%	1,296 7.3%	1,208 4.4%	1,252 7.9%	1,152 10.0%	896 -6.4%
2018	1,038 -6.3%	1,134 -9.6%	1,494 -1.6%	1,670 14.4%	1,533 -0.7%							

Market History Report © 2018 TREND. Compiled 6/21/2018. Information deemed reliable, but not guaranteed. Non-members contact TREND for reprint permission.

TREND • 660 American Avenue, Suite 203 • King of Prussia, PA 19406 • 1-877-330-9900 • www.trendmls.com

Philadelphia County, PA - Single-Family - Settled Units

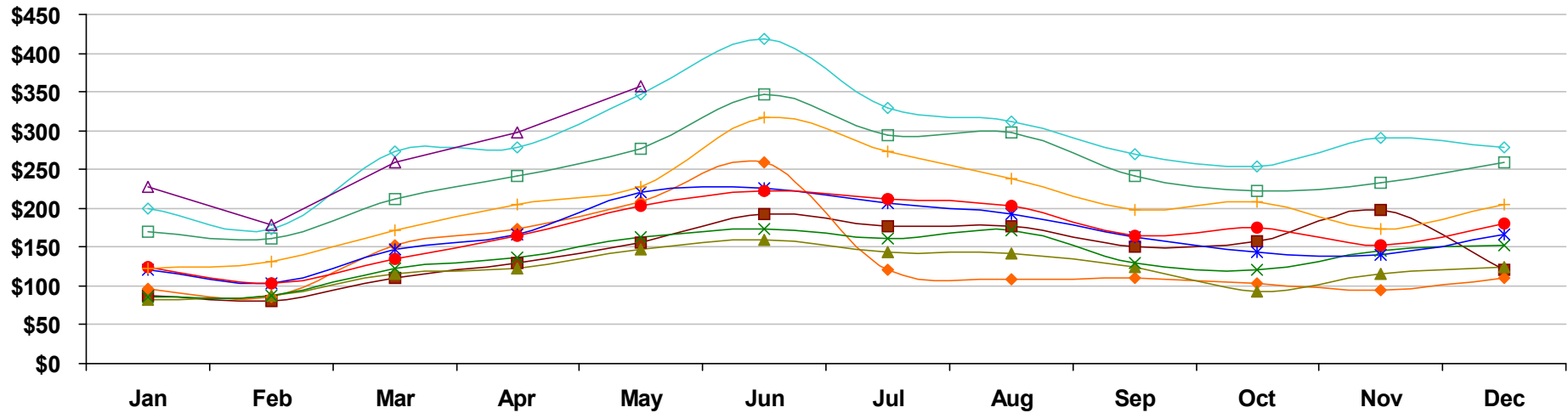


	Jan	Feb	Mar	Apr	May	Jun	Jul	Aug	Sep	Oct	Nov	Dec
2009	589 -27.0%	583 -26.8%	749 -22.5%	817 -19.7%	941 -13.5%	995 -13.1%	1,022 -3.2%	1,039 -0.2%	954 3.6%	1,054 22.6%	1,225 75.0%	807 11.8%
2010	627 6.5%	569 -2.4%	968 29.2%	1,066 30.5%	1,228 30.5%	1,364 37.1%	697 -31.8%	726 -30.1%	701 -26.5%	696 -34.0%	616 -49.7%	711 -11.9%
2011	560 -10.7%	548 -3.7%	745 -23.0%	819 -23.2%	854 -30.5%	929 -31.9%	820 17.6%	841 15.8%	758 8.1%	638 -8.3%	693 12.5%	789 11.0%
2012	585 4.5%	612 11.7%	790 6.0%	794 -3.1%	902 5.6%	944 1.6%	833 1.6%	928 10.3%	763 0.7%	720 12.9%	859 24.0%	849 7.6%
2013	771 31.8%	671 9.6%	854 8.1%	1,004 26.4%	1,193 32.3%	1,113 17.9%	1,086 30.4%	1,021 10.0%	890 16.6%	859 19.3%	797 -7.2%	902 6.2%
2014	714 -7.4%	598 -10.9%	784 -8.2%	898 -10.6%	1,069 -10.4%	1,121 0.7%	1,089 0.3%	1,059 3.7%	942 5.8%	1,020 18.7%	853 7.0%	1,018 12.9%
2015	711 -0.4%	778 30.1%	916 16.8%	1,083 20.6%	1,144 7.0%	1,406 25.4%	1,331 22.2%	1,143 7.9%	1,038 10.2%	1,118 9.6%	907 6.3%	1,131 11.1%
2016	894 25.7%	900 15.7%	1,099 20.0%	1,186 9.5%	1,266 10.7%	1,585 12.7%	1,347 1.2%	1,374 20.2%	1,212 16.8%	1,135 1.5%	1,112 22.6%	1,207 6.7%
2017	889 -0.6%	915 1.7%	1,241 12.9%	1,237 4.3%	1,479 16.8%	1,696 7.0%	1,365 1.3%	1,431 4.1%	1,223 0.9%	1,216 7.1%	1,233 10.9%	1,227 1.7%
2018	1,020 14.7%	845 -7.7%	1,138 -8.3%	1,269 2.6%	1,447 -2.2%							

Market History Report © 2018 TREND. Compiled 6/21/2018. Information deemed reliable, but not guaranteed. Non-members contact TREND for reprint permission.

TREND • 660 American Avenue, Suite 203 • King of Prussia, PA 19406 • 1-877-330-9900 • www.trendmls.com

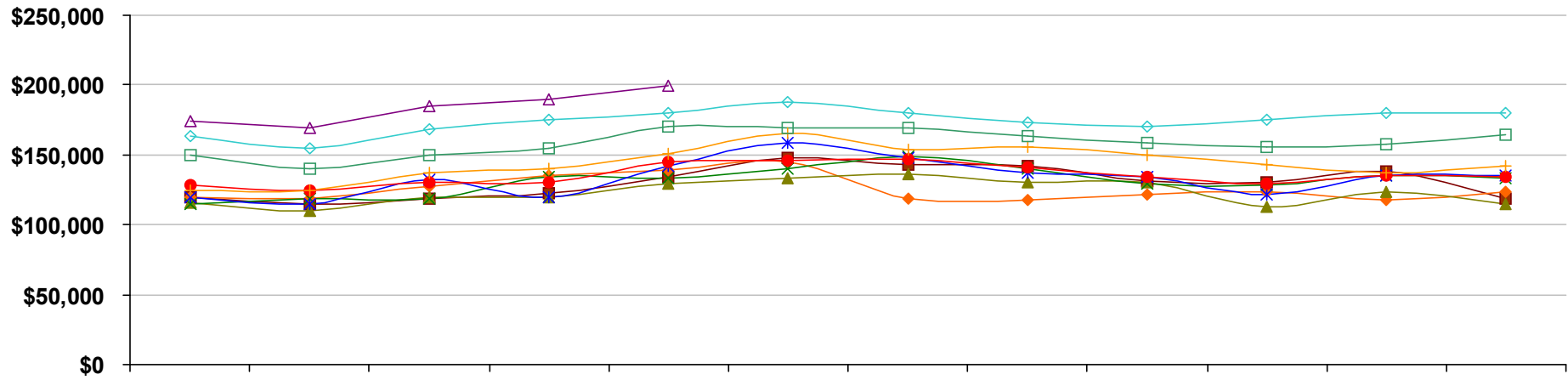
Philadelphia County, PA - Single-Family - Total Settled Volume



	Jan	Feb	Mar	Apr	May	Jun	Jul	Aug	Sep	Oct	Nov	Dec
■ 2009	\$88 -32.8%	\$81 -34.5%	\$110 -29.8%	\$129 -23.0%	\$155 -16.7%	\$193 -8.0%	\$176 -13.8%	\$176 -5.8%	\$150 -2.4%	\$158 26.2%	\$197 81.5%	\$121 8.1%
◆ 2010	\$97 10.9%	\$86 7.1%	\$152 38.3%	\$173 34.6%	\$209 35.0%	\$259 34.3%	\$121 -31.2%	\$108 -38.8%	\$110 -26.5%	\$103 -34.8%	\$95 -51.9%	\$111 -8.7%
▲ 2011	\$82 -15.8%	\$87 0.7%	\$115 -24.5%	\$122 -29.4%	\$147 -29.9%	\$160 -38.4%	\$144 19.0%	\$142 31.3%	\$124 12.1%	\$92 -10.8%	\$116 22.2%	\$124 12.1%
✕ 2012	\$86 5.4%	\$88 1.6%	\$123 7.7%	\$137 11.9%	\$162 10.2%	\$173 8.3%	\$161 11.4%	\$172 21.1%	\$130 4.8%	\$121 31.4%	\$146 26.0%	\$153 23.0%
✱ 2013	\$121 39.8%	\$103 17.0%	\$147 19.3%	\$166 21.3%	\$221 36.8%	\$226 30.8%	\$207 28.8%	\$192 11.7%	\$163 25.5%	\$143 18.4%	\$140 -4.3%	\$167 9.6%
● 2014	\$125 3.2%	\$103 -0.4%	\$135 -8.5%	\$164 -1.2%	\$203 -8.3%	\$222 -1.8%	\$211 2.1%	\$203 6.0%	\$164 0.5%	\$175 22.3%	\$152 8.6%	\$180 7.6%
+ 2015	\$122 -2.1%	\$132 28.4%	\$172 28.0%	\$205 25.0%	\$227 11.9%	\$317 43.1%	\$273 29.3%	\$239 17.8%	\$198 20.8%	\$209 18.9%	\$173 13.7%	\$204 13.3%
□ 2016	\$169 38.5%	\$161 22.0%	\$211 22.4%	\$242 18.2%	\$277 22.3%	\$346 9.2%	\$295 8.1%	\$297 24.1%	\$242 22.6%	\$222 6.4%	\$233 35.2%	\$259 26.6%
◇ 2017	\$199 17.6%	\$174 7.9%	\$273 29.5%	\$279 15.4%	\$346 24.8%	\$419 20.8%	\$329 11.3%	\$311 4.6%	\$270 11.5%	\$254 14.4%	\$290 24.2%	\$278 7.4%
△ 2018	\$227 14.2%	\$179 2.8%	\$259 -5.2%	\$298 6.6%	\$357 3.3%							

Values on this report are displayed in Millions

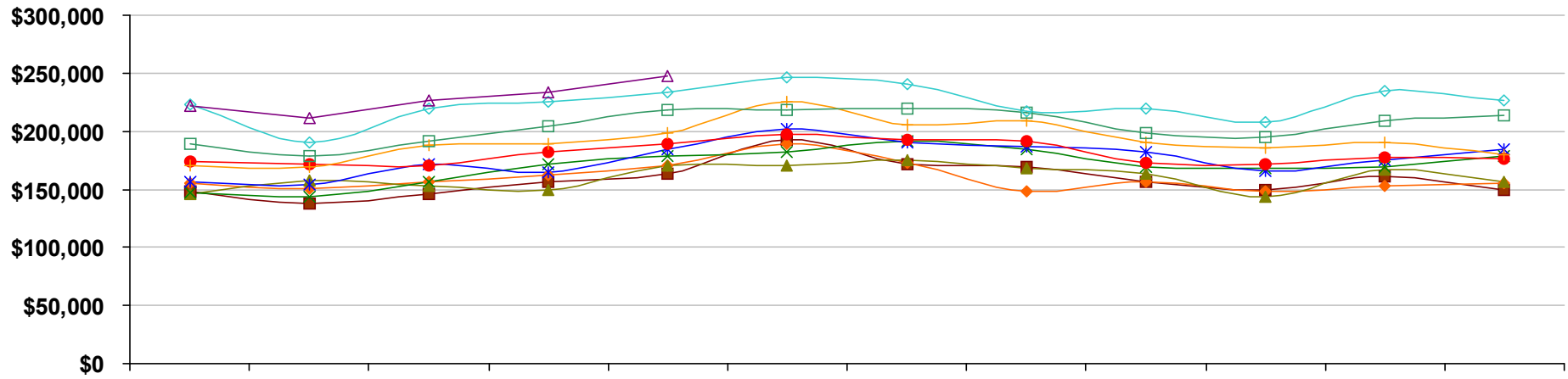
Philadelphia County, PA - Single-Family - Median Settled Price



	Jan	Feb	Mar	Apr	May	Jun	Jul	Aug	Sep	Oct	Nov	Dec
2009	\$120,000 0.8%	\$115,000 0.0%	\$119,000 -4.8%	\$123,000 -3.1%	\$134,000 1.5%	\$148,000 2.1%	\$143,000 0.7%	\$142,000 2.9%	\$131,000 -0.8%	\$130,000 9.2%	\$138,000 15.0%	\$119,000 -0.8%
2010	\$120,000 0.0%	\$119,000 3.5%	\$127,000 6.7%	\$135,000 9.8%	\$139,000 3.7%	\$145,000 -2.0%	\$119,000 -16.8%	\$118,000 -16.9%	\$122,000 -6.9%	\$124,000 -4.6%	\$118,000 -14.5%	\$124,000 4.2%
2011	\$116,000 -3.3%	\$110,000 -7.6%	\$120,000 -5.5%	\$120,000 -11.1%	\$129,000 -7.2%	\$133,000 -8.3%	\$136,000 14.3%	\$130,000 10.2%	\$130,000 6.6%	\$113,000 -8.9%	\$124,000 5.1%	\$115,000 -7.3%
2012	\$115,000 -0.9%	\$119,000 8.2%	\$119,000 -0.8%	\$134,000 11.7%	\$133,000 3.1%	\$140,000 5.3%	\$149,000 9.6%	\$140,000 7.7%	\$129,000 -0.8%	\$128,000 13.3%	\$135,000 8.9%	\$133,000 15.7%
2013	\$120,000 4.3%	\$115,000 -3.4%	\$132,000 10.9%	\$120,000 -10.4%	\$142,000 6.8%	\$159,000 13.6%	\$148,000 -0.7%	\$137,000 -2.1%	\$134,000 3.9%	\$122,000 -4.7%	\$135,000 0.0%	\$135,000 1.5%
2014	\$128,000 6.7%	\$125,000 8.7%	\$130,000 -1.5%	\$130,000 8.3%	\$145,000 2.1%	\$146,000 -8.2%	\$147,000 -0.7%	\$141,000 2.9%	\$134,000 0.0%	\$129,000 5.7%	\$135,000 0.0%	\$134,000 -0.7%
2015	\$125,000 -2.3%	\$125,000 0.0%	\$137,000 5.4%	\$140,000 7.7%	\$151,000 4.1%	\$165,000 13.0%	\$154,000 4.8%	\$156,000 10.6%	\$150,000 11.9%	\$143,000 10.9%	\$137,000 1.5%	\$142,000 6.0%
2016	\$150,000 20.0%	\$140,000 12.0%	\$150,000 9.5%	\$155,000 10.7%	\$170,000 12.6%	\$169,000 2.4%	\$169,000 9.7%	\$163,000 4.5%	\$159,000 6.0%	\$156,000 9.1%	\$158,000 15.3%	\$164,000 15.5%
2017	\$163,000 8.7%	\$155,000 10.7%	\$168,000 12.0%	\$175,000 12.9%	\$180,000 5.9%	\$188,000 11.2%	\$180,000 6.5%	\$173,000 6.1%	\$170,000 6.9%	\$175,000 12.2%	\$180,000 13.9%	\$180,000 9.8%
2018	\$174,000 6.7%	\$169,000 9.0%	\$185,000 10.1%	\$190,000 8.6%	\$199,000 10.6%							

Market History Report © 2018 TREND. Compiled 6/21/2018. Information deemed reliable, but not guaranteed. Non-members contact TREND for reprint permission.

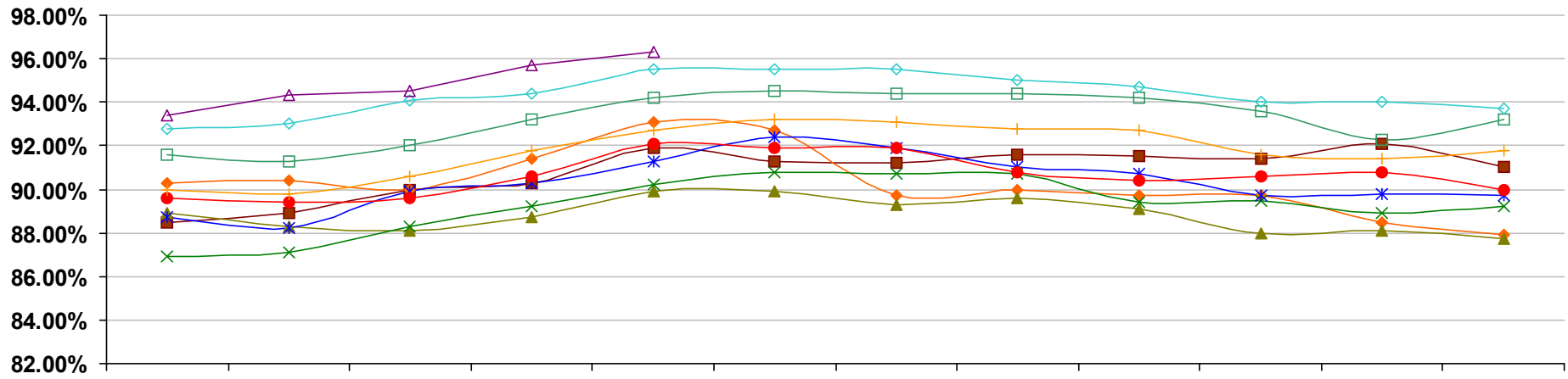
Philadelphia County, PA - Single-Family - Average Settled Price



	Jan	Feb	Mar	Apr	May	Jun	Jul	Aug	Sep	Oct	Nov	Dec
■ 2009	\$148,000 -8.1%	\$138,000 -10.4%	\$146,000 -9.3%	\$157,000 -4.3%	\$164,000 -3.5%	\$193,000 6.0%	\$172,000 -10.9%	\$169,000 -5.6%	\$157,000 -6.0%	\$150,000 3.4%	\$161,000 3.9%	\$150,000 -3.2%
◆ 2010	\$155,000 4.7%	\$151,000 9.4%	\$156,000 6.8%	\$162,000 3.2%	\$170,000 3.7%	\$189,000 -2.1%	\$173,000 0.6%	\$148,000 -12.4%	\$157,000 0.0%	\$148,000 -1.3%	\$153,000 -5.0%	\$155,000 3.3%
▲ 2011	\$146,000 -5.8%	\$158,000 4.6%	\$153,000 -1.9%	\$149,000 -8.0%	\$171,000 0.6%	\$171,000 -9.5%	\$175,000 1.2%	\$168,000 13.5%	\$163,000 3.8%	\$144,000 -2.7%	\$167,000 9.2%	\$157,000 1.3%
✕ 2012	\$147,000 0.7%	\$144,000 -8.9%	\$156,000 2.0%	\$172,000 15.4%	\$179,000 4.7%	\$182,000 6.4%	\$192,000 9.7%	\$185,000 10.1%	\$169,000 3.7%	\$168,000 16.7%	\$169,000 1.2%	\$179,000 14.0%
✱ 2013	\$156,000 6.1%	\$154,000 6.9%	\$172,000 10.3%	\$165,000 -4.1%	\$185,000 3.4%	\$202,000 11.0%	\$190,000 -1.0%	\$187,000 1.1%	\$182,000 7.7%	\$166,000 -1.2%	\$175,000 3.6%	\$185,000 3.4%
● 2014	\$174,000 11.5%	\$172,000 11.7%	\$171,000 -0.6%	\$182,000 10.3%	\$189,000 2.2%	\$197,000 -2.5%	\$193,000 1.6%	\$191,000 2.1%	\$173,000 -4.9%	\$172,000 3.6%	\$178,000 1.7%	\$176,000 -4.9%
✚ 2015	\$171,000 -1.7%	\$169,000 -1.7%	\$188,000 9.9%	\$189,000 3.8%	\$198,000 4.8%	\$225,000 14.2%	\$205,000 6.2%	\$209,000 9.4%	\$190,000 9.8%	\$186,000 8.1%	\$190,000 6.7%	\$180,000 2.3%
◻ 2016	\$189,000 10.5%	\$179,000 5.9%	\$192,000 2.1%	\$204,000 7.9%	\$218,000 10.1%	\$218,000 -3.1%	\$219,000 6.8%	\$216,000 3.3%	\$199,000 4.7%	\$195,000 4.8%	\$209,000 10.0%	\$214,000 18.9%
◇ 2017	\$223,000 18.0%	\$190,000 6.1%	\$220,000 14.6%	\$225,000 10.3%	\$233,000 6.9%	\$246,000 12.8%	\$240,000 9.6%	\$217,000 0.5%	\$220,000 10.6%	\$208,000 6.7%	\$235,000 12.4%	\$226,000 5.6%
△ 2018	\$222,000 -0.4%	\$211,000 11.1%	\$227,000 3.2%	\$234,000 4.0%	\$247,000 6.0%							

Market History Report © 2018 TREND. Compiled 6/21/2018. Information deemed reliable, but not guaranteed. Non-members contact TREND for reprint permission.

Philadelphia County, PA - Single-Family - Average Settled Price/Original Price



	Jan	Feb	Mar	Apr	May	Jun	Jul	Aug	Sep	Oct	Nov	Dec
■ 2009	88.5% -1.9%	88.9% -1.1%	90.0% -0.6%	90.3% -0.7%	91.9% 0.4%	91.3% -0.6%	91.2% -0.5%	91.6% 0.1%	91.5% -0.2%	91.4% 0.7%	92.1% 3.3%	91.0% 1.9%
◆ 2010	90.3% 2.1%	90.4% 1.6%	90.0% 0.0%	91.4% 1.3%	93.1% 1.3%	92.7% 1.5%	89.7% -1.6%	90.0% -1.7%	89.7% -2.0%	89.7% -1.9%	88.5% -3.9%	87.9% -3.4%
▲ 2011	88.9% -1.6%	88.3% -2.3%	88.1% -2.2%	88.7% -2.9%	89.9% -3.4%	89.9% -3.0%	89.3% -0.4%	89.6% -0.5%	89.1% -0.7%	88.0% -1.9%	88.1% -0.5%	87.7% -0.3%
× 2012	86.9% -2.3%	87.1% -1.4%	88.3% 0.2%	89.2% 0.5%	90.2% 0.3%	90.8% 1.0%	90.7% 1.5%	90.7% 1.2%	89.4% 0.4%	89.5% 1.8%	88.9% 0.9%	89.2% 1.7%
✱ 2013	88.7% 2.1%	88.2% 1.3%	89.9% 1.8%	90.3% 1.3%	91.3% 1.2%	92.4% 1.8%	91.9% 1.3%	91.0% 0.4%	90.7% 1.4%	89.7% 0.3%	89.8% 1.0%	89.7% 0.5%
● 2014	89.6% 1.0%	89.4% 1.4%	89.6% -0.3%	90.6% 0.3%	92.1% 0.8%	91.9% -0.5%	91.9% 0.0%	90.8% -0.2%	90.4% -0.4%	90.6% 0.9%	90.8% 1.0%	90.0% 0.4%
+ 2015	90.0% 0.4%	89.8% 0.5%	90.6% 1.1%	91.8% 1.3%	92.7% 0.7%	93.2% 1.4%	93.1% 1.3%	92.8% 2.2%	92.7% 2.6%	91.6% 1.1%	91.4% 0.7%	91.8% 2.0%
□ 2016	91.6% 1.8%	91.3% 1.7%	92.0% 1.5%	93.2% 1.5%	94.2% 1.7%	94.5% 1.4%	94.4% 1.4%	94.4% 1.7%	94.2% 1.6%	93.6% 2.2%	92.3% 1.0%	93.2% 1.6%
◇ 2017	92.8% 1.3%	93.0% 1.8%	94.1% 2.3%	94.4% 1.2%	95.5% 1.3%	95.5% 1.1%	95.5% 1.1%	95.0% 0.6%	94.7% 0.5%	94.0% 0.4%	94.0% 1.9%	93.7% 0.5%
△ 2018	93.4% 0.7%	94.3% 1.4%	94.5% 0.4%	95.7% 1.4%	96.3% 0.8%							

Market History Report © 2018 TREND. Compiled 6/21/2018. Information deemed reliable, but not guaranteed. Non-members contact TREND for reprint permission.

TREND • 660 American Avenue, Suite 203 • King of Prussia, PA 19406 • 1-877-330-9900 • www.trendmls.com